

DAVIS®

Always Ahead™



IP65 UNDERFLOOR BOX



BS IEC

CE

KEMA



DEKRA

www.davis.com.my



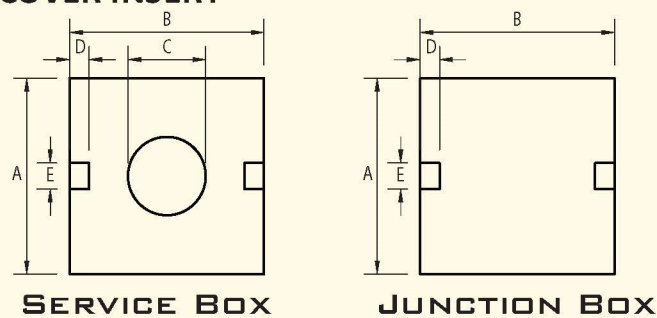
TECHNICAL DATA

IP 65 UNDERFLOOR SERVICE BOX

L X W X H (mm)	Model		No Compart.	Trk Entry W X H (mm)
	10mm Recess	20mm Recess		
250X250X75	IUFVS250/2/38/SS/10	IUFVS250/2/38/SS/20	2	250X38
250X250X90	IUFVS250/3/38/SS/10	IUFVS250/3/38/SS/20	3	250X38
300X300X75	IUFVS250/2/38/SS/10	IUFVS300/2/38/SS/20	2	300X38
300X300X90	IUFVS250/3/38/SS/10	IUFVS300/3/38/SS/20	3	300X38

- For 250x250, 300x300 service boxes, traps (1.5mm) and frames (2.0mm) are made SUS 304 stainless steel sheets with 6.0mm pre-galvanised steel infill plates.
- Also available in SUS 316.
- Other recess heights are also available.

DIMENSION OF FLOOR COVER INSERT



The dimensions in the table below provide the recommended sizes of the floor cover insert for the traps of Service and Junction Boxes.

Box Size L X W (mm)	Dimension (mm)				
	A	B	C	D	E
250X250	240	240	101	26	33
300X300	290	290	101	26	33

SCREEDING AND FINISHED FLOOR DEPTH

FOR 2 COMPARTMENT

MIN. FINISHED FLOOR 95mm
MIN. SCREEDING FLOOR 75mm
38mm

- Davis IP65 Underfloor Box with 2 compartments adjusted to suit screed depth of between 75mm and 88mm.
- Other sizes of leveling systems are also available on request.

FOR 3 COMPARTMENT

MIN. FINISHED FLOOR 110mm
MIN. SCREEDING FLOOR 90mm
38mm

- Davis IP65 Underfloor Box with 3 compartments adjusted to suit screed depth of between 90mm and 103mm.
- Other sizes of leveling systems are also available on request.

DAVIS MALAYSIA SDN. BHD. (336731-A)

Lot 526, Jalan Rantau Panjang, Batu 11, 42500 Teluk Panglima Garang, Kuala Langat, Selangor, Malaysia. Tel: +60 3 3122 2488 Fax: +60 3 3122 2482 Enquiries: enquiries@davis.com.my Website: www.davis.com.my

The information contained in this brochure has been carefully compiled and is for guidance only. We do not accept any responsibility for loss caused by any error contained herein. We reserve the right to alter designs and specifications without prior notice, in line with our policy of continuous product improvement.

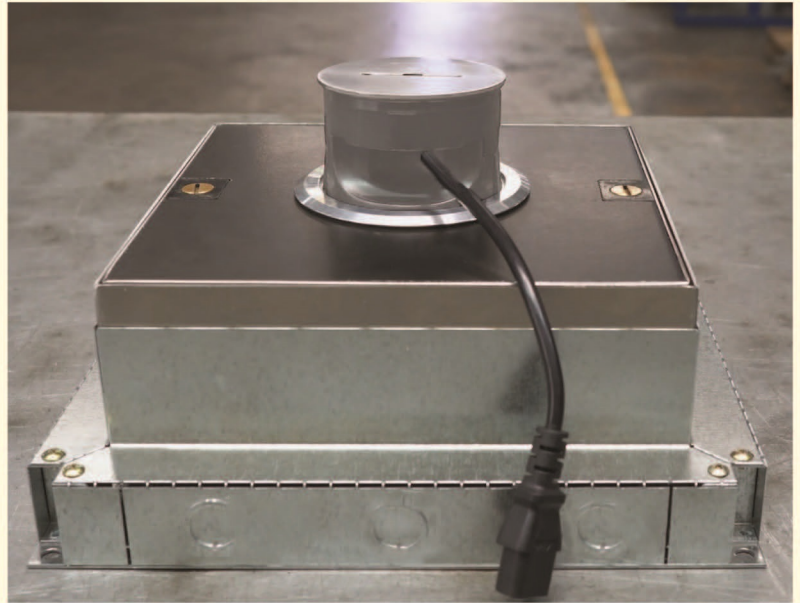
Printed in Malaysia

INTRODUCTION

Davis IP65 Underfloor Box is designed to withstand ingress of dust and water up to Ingress Protection rating of IP65. It provides a solution for the distribution of power, voice and data services in floors where the trunking is buried in the screed. It is used for carrying services to feed a grid of outlet installation and can be used to integrate with the perimeter or surface trunking system. Davis IP65 Underfloor Box comes complete with a unique cord outlet design for heavy load capacity and wet wash solutions.

FEATURE BENEFITS

- Comply to Ingress Protection rating of IP65 in accordance with IEC 60529 : 2001.
- Stainless steel trap and frame tested to withstand 10kN load in accordance with BS EN 50085-2-2.
- Basic box constructed from pre-galvanized steel sheet in accordance with BS 4678 : Part 2, BS EN 50085-2-2 & IEC 61084-2-2.
- The system incorporates the design features that ensures a fast and simple installation.
- Designed to support CAT 6 structured cabling systems.
- Suitable for screeded depth from 75mm.
- Choice of 1, 2 or 3 compartment floor boxes.
- Wide range of power and data accessories available to meet all requirements.



i TECHNICAL SPECIFICATIONS

Junction Box / Service Outlet Box

Materials	The trap and frame are constructed from stainless steel SUS 304 and the basic box is constructed from pre-galvanized steel, with provision for trunking entry on four sides for 20mm and 25mm conduits (38mm trunking height) on blank sides. Cord Outlet mouldings are manufactured from engineering plastic (Nylon). A throwaway lid shall be provided to prevent the ingress of screed during installation
Strength	Davis IP65 Underfloor Boxes is designed and tested to accept 10kN in accordance to BSEN 50085-2-2.
Lid Opening	Service outlet cover shall be able to fully open with quick lock system. Junction box cover is fully shut and secured by quick lock system.
Electromagnetic Compatibility	Junction Box shall be provided with pre-galvanized steel flyover for compartment segregation. Due to electromagnetic interference, the use of plastic flyover is not suitable. This is to comply with the latest I.E.E regulation. A service outlet box shall have fully segregated outlet panels to isolate the services in compliance with the latest I.E.E regulation.



SERVICE OUTLET BOX

Wet Washable

- Specifically designed to seal against dust and water ingress to IP65
- Top cover and cord outlet design allows floor to be washed when not in use

Trap and Frame

- Trap and frame sizes: 250x250mm, 300x300mm
- Reinforced with 6mm thick pre-galvanized steel infill plate

Frame Sealing Gasket

- Sealing gasket prevents dust and water ingress when the trap is closed

Compartment Segregation

- Box available in 1, 2 and 3 compartments

Basic Box

- Provided with disposable lid to prevent ingress during screeding

Unique Cord Outlet

- 9mm wide aluminium flange to cater for uneven-cut tile or marble infills

Quick Lock System

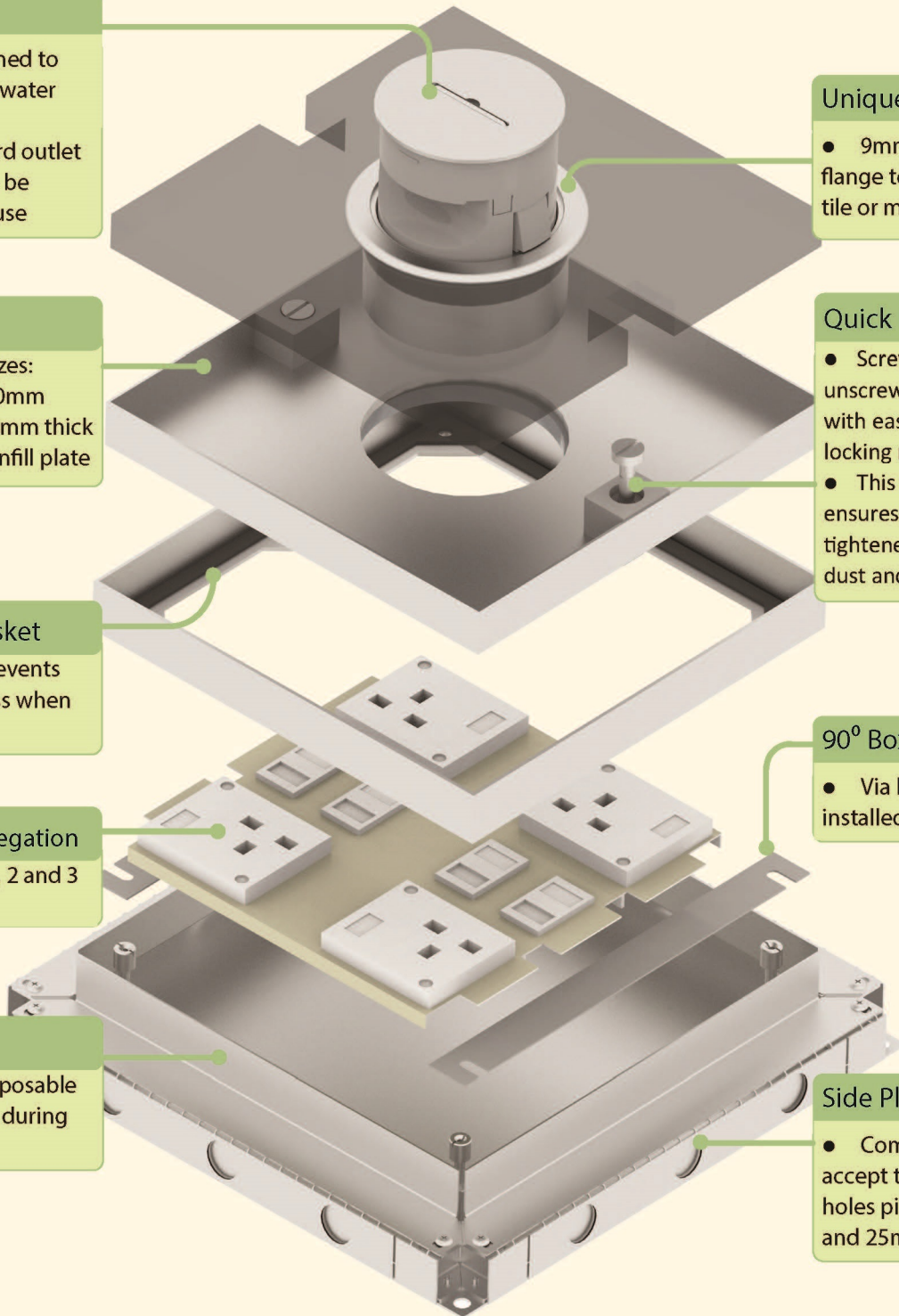
- Screw to tighten and unscrew to release the trap with ease with its unique locking mechanism
- This quick lock system ensures the trap and frame are tightened to further prevent dust and water ingress

90° Box Rotation

- Via brackets that can be installed in either of 2 sides

Side Plate

- Comes with perforation to accept trunking and knockout holes pierced to accept 20mm and 25mm conduits



Note: A tile lifter is recommended to be used to lift the trap due to the weight of the trap and floor covering.